

PH LINE CALANDRE IDRAULICHE A TRE RULLI PH LINE THREE ROLLS HYDRAULIC PLATE BENDING MACHINES



EXPERIENCE MAKES US **LEADERS**

PH LINE GALANDRI

MACCHINE A TRE RULLI PH LINE THREE ROLLS HYDRAULIC PLATE BENDING MACHINES PH LINE GALANDRI

CALANDRE MG AD ASSI VARIABILI

Il rullo superiore a movimento verticale e i rulli laterali si muovono orizzontalmente. Tre rulli motorizzati tramite riduttori epicicloidali. Lubrificazione permanente. Rulli montati su cuscinetti ad alto carico ed a doppia fila di rulli. Conicità dei rulli eseguita con una sagomatura bi-conica per annullare le flessioni dei rulli stessi durante le lavorazioni. Le nuove PH a geometria variabile sono semplici da usare, efficienti e adatte per la lavorazione di grandi spessori.

MG VARIABLE AXIS PLATE ROLLS

Top roll with vertical movement and side rolls moving horizontally. Three motorized rolls through planetary gearboxes. Permanent lubrication. Double spherical roller bearings. Rolls cambering is based on the thickness to be rolled, this way we can avoid any type of roll deflection while rolling. The new PH with variable geometry are easy to operate, efficient and especially suitable for high thicknesses.

MG VARIABLE 3-WALZEN RUNDBIEGEMASCHINE

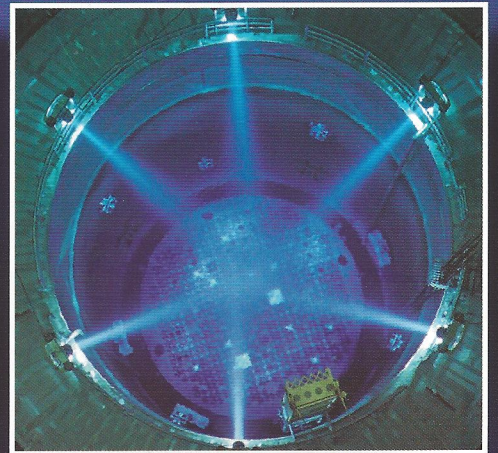
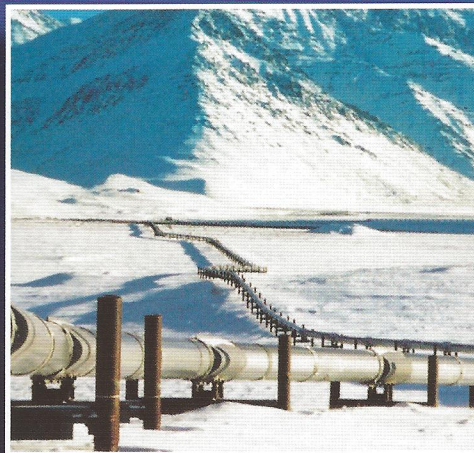
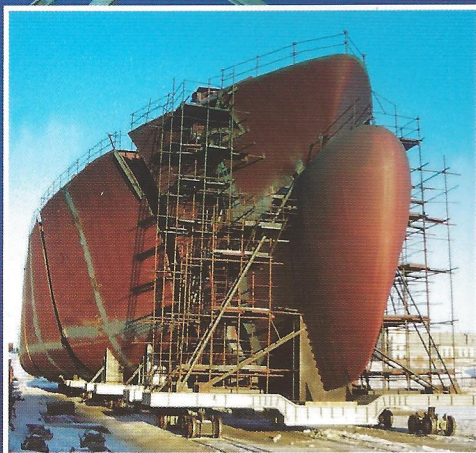
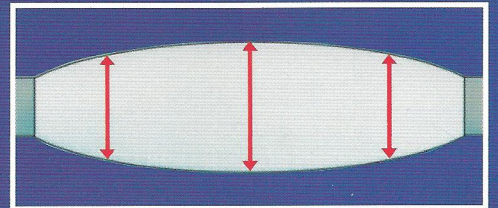
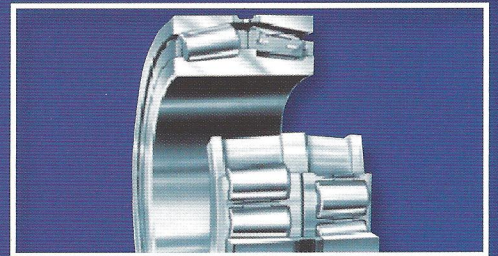
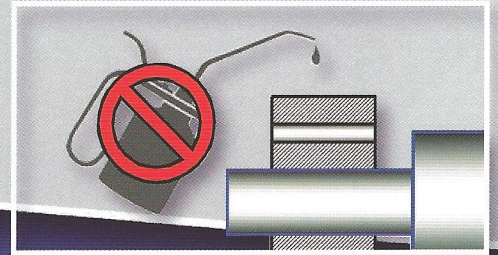
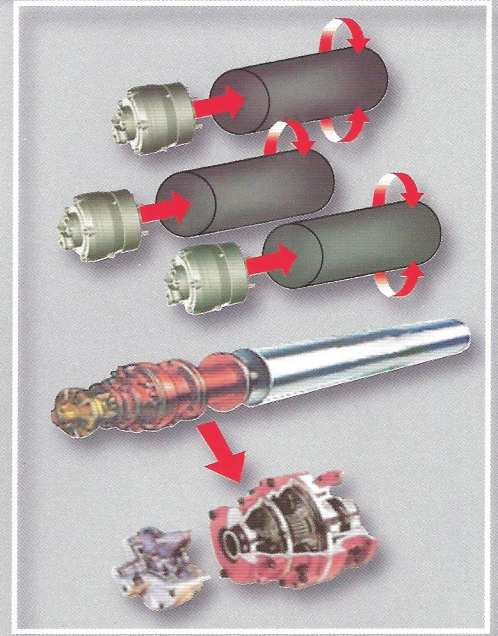
Die Oberwalze verfährt senkrecht, die Seitenwalzen werden horizontal verfahren. Alle drei Walzen werden über Planetengetriebe und Hydromotoren direkt angetrieben. Alle Lager mit Dauerschmierung. Die Bombierung der Walzen wird dem Biegeauftrag angepasst um Verformungen wie Fassbildung auszuschließen. Dank der variablen Achsverstellung der Walzen erreicht diese Baureihe eine gute Anbiegung und kann gleichzeitig für das Runden besonders dicker Bleche kombiniert werden.

ROULEUSES MG À GÉOMÉTRIE VARIABLE

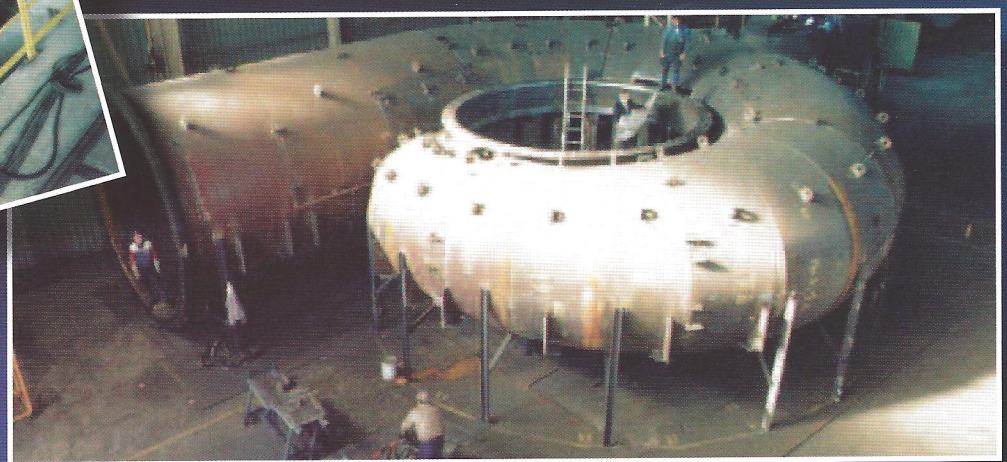
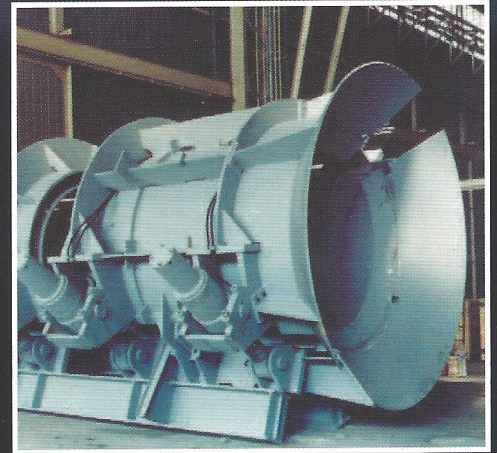
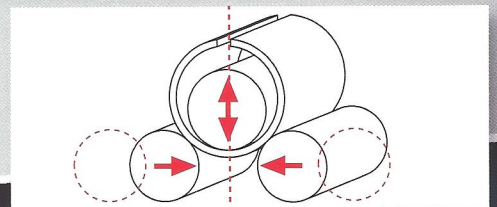
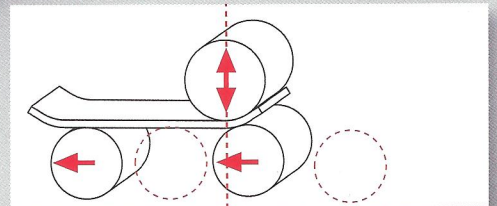
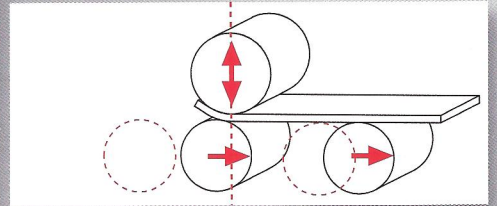
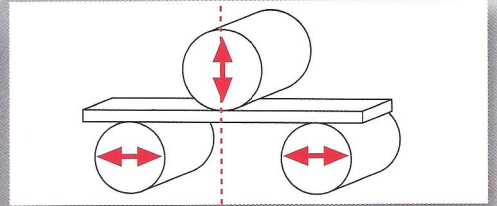
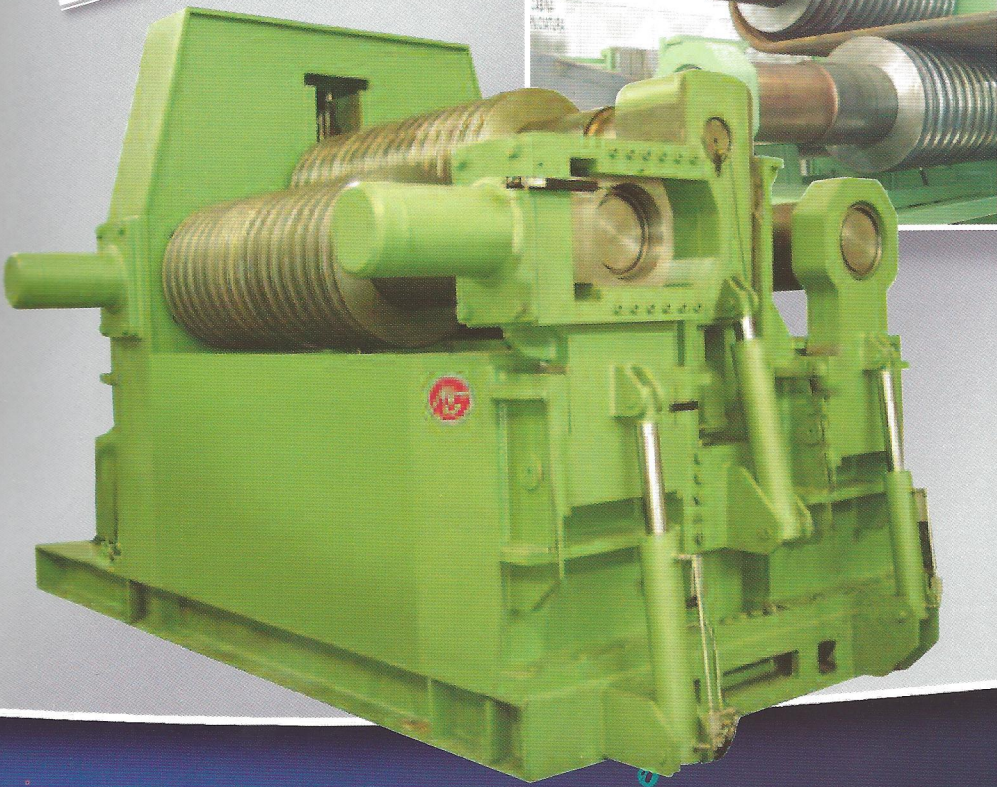
Rouleau supérieur à mouvement vertical et rouleau latéraux à mouvement horizontal. Trois rouleaux motorisés à travers réducteurs planétaires. Lubrification permanente. Rouleaux montés sur roulement à deux rangées de billes à haute charge. Conicité des rouleaux réalisée avec une forme bi-conique pour annuler la flexion des rouleaux pendant le traitement. Les nouvelles rouleuses série PH à géométrie variable sont faciles à utiliser, performantes, adaptées pour le roulage des grandes épaisseurs.

CILINDRADORAS MG CON EJES VARIABLES

El rodillo superior tiene movimiento vertical y los rodillos laterales se mueven horizontalmente. Tres rodillos motorizados mediante reductores epicicloidales. Lubricación permanente. Rodillos montados con rodamientos de alta performance y de doble pista. Biconicidad de los rodillos para anular las flexiones de los mismos durante las elaboraciones. Las nuevas PH a geometría variable son simples de operar, eficientes y aptas para el curvado de grandes espesores.



SPECIAL

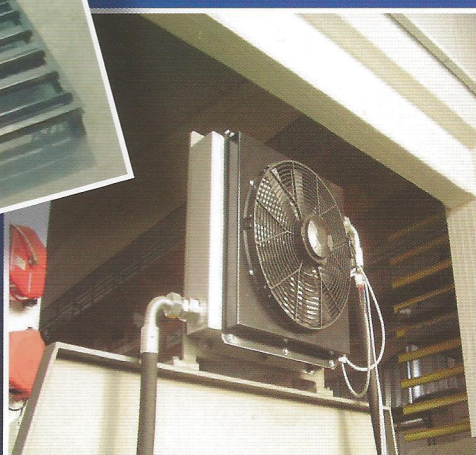


DATI TECNICI • TECHNICAL DATA • TECHNISCHE DATEN • DONNEES TECHNIQUES • DATOS TÉCNICOS

Modello Model	Utile Lavoro Working Length	Calandratura Rolling	Invito Pre-Bending	R.S. Top roll Ø	R.L. Side rolls Ø	HP HP
PH 26.110	2600	25	20	340	320	30
PH 26.150	2600	30	25	370	350	40
PH 26.240	2600	35	30	430	390	50
PH 26.320	2600	50	35	450	420	60
PH 26.500	2600	60	50	530	490	75
PH 26.760	2600	80	60	620	590	100
PH 26.1100	2600	100	70	720	660	125
PH 26.1500	2600	120	100	820	780	175
PH 26.1900	2600	150	110	940	880	220
PH 26.2200	2600	170	130	1100	950	300
<hr/>						
PH 3.110	3100	20	16	340	320	30
PH 3.150	3100	25	20	370	350	40
PH 3.240	3100	32	25	430	390	50
PH 3.320	3100	45	32	450	420	60
PH 3.500	3100	55	45	530	490	75
PH 3.760	3100	70	55	620	590	100
PH 3.1100	3100	90	65	720	680	125
PH 3.1500	3100	110	85	820	780	175
PH 3.1900	3100	140	105	940	880	220
PH 3.2200	3100	160	125	1100	950	300

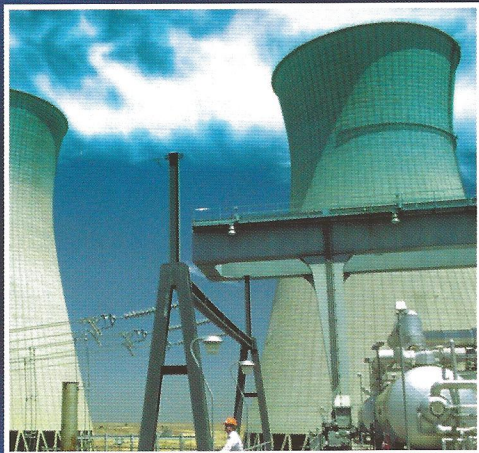
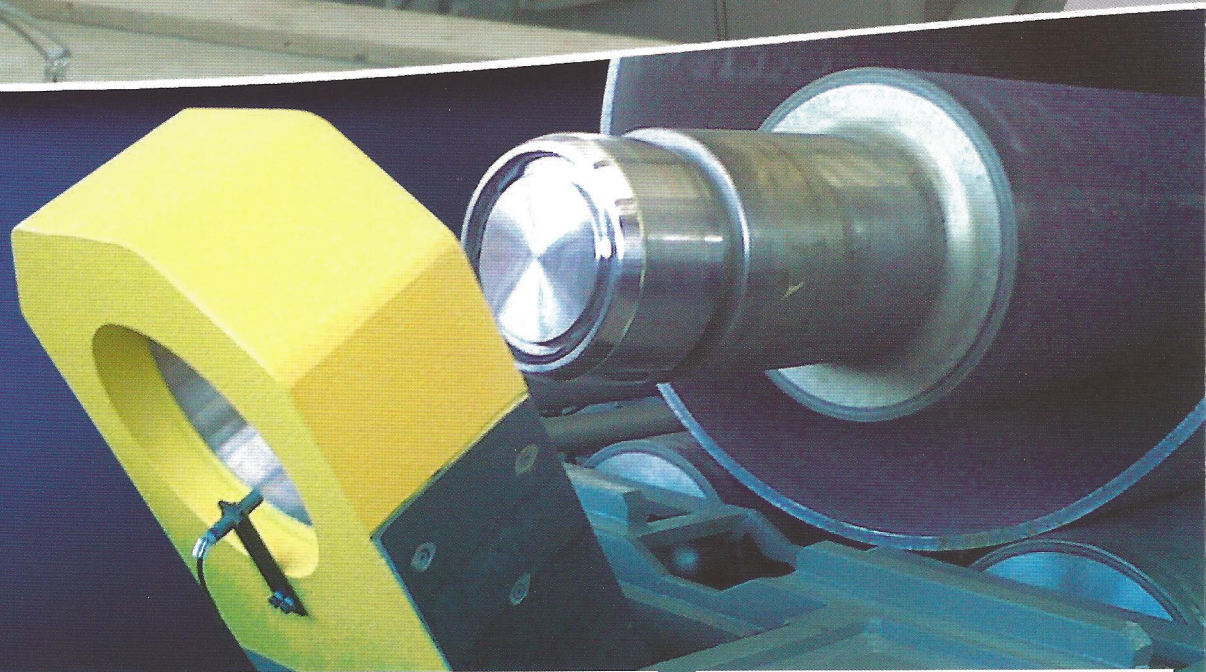
Prestazioni con lamiera SN = 260 N/mm² - Diametri riferimento = 5 x rs - Based on Material with Yield Point = 260N/mm² and 5 times the top roll Diameter

ACCESSORI • ACCESSORIES • ZUBEHÖR • ACCESSOIRES • ACCESORIOS



PH LINE

MACCHINE IDRAULICHE A TRE RULLI PH LINE THREE ROLLS HYDRAULIC PLATE BENDING MACHINES PH LINE CA





Sede Operativa

12045 **FOSSANO** (CUNEO) Via Ceresolia, 20
Tel. +39 0172 691327 Fax +39 0172 691676

Sede Commerciale

47020 **SANTA MARIA NUOVA** (FC) Italy
Via Delle Fosse, 35
Tel. +39 0543 441080 Fax +39 0543 441039

www.mgsrl.com e-mail: info@mgsrl.com