



*Selling Top-Quality  
Metalworking Machinery  
for Over 30 Years.*



C MARSHALL FABRICATION  
MACHINERY, INC.

For Orders & More Information,  
Call Today - (866) 399-2323



# **EZ-Seam Weld Positioner WT 6/14**



The EZ-Seam model WT 6/14, (worldwide patent pending), is a new and innovative solution specifically engineered to dramatically reduce the time required to perfectly position wind tower sections prior to the welding process.

## **FEATURES & CAPACITY**

- Minimum shell OD: 6 ft
- Maximum shell OD: 14 ft
- Variable shell rotation speed according to welding needs
- Total tower section length up to 80 ft
- Total tower section weight up to 240,000 lbs.

**SMALLER UNITS WILL SOON BE AVAILABLE!**

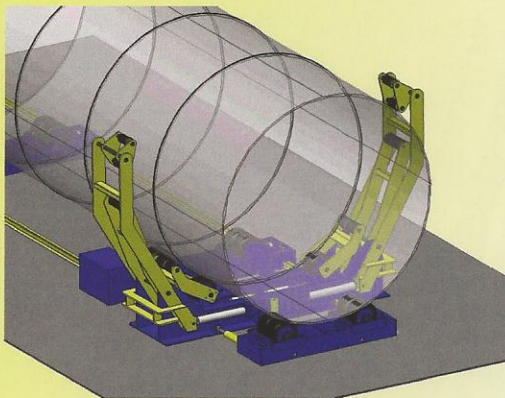
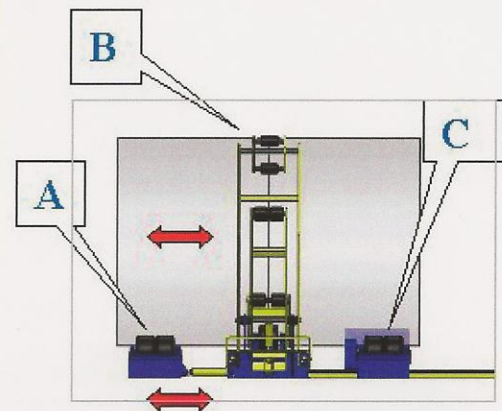
## **BENEFITS AND ADVANTAGES**

- 1 Over 50% reduction of section positioning time.
- 2 Portable wireless remote, allowing complete control of the entire wind tower section positioning process by only ONE operator without the need to tie up valuable crane time!
- 3 Effective and efficient longitudinal alignment thanks to the rail system used to guide both the “drive roll” unit and the “idler(s)” supporting the sections of the tower which have already been welded.
- 4 Improved safety in the workplace thanks to the innovative design of the EZ-Seam, including the automation of the wind tower section alignment process, the ability to control all alignment operations from a single wireless remote control, simple and effective rail system structure, etc. These features eliminate the need for less reliable, traditional tools such as sledges, wedges, chains, etc. in the section alignment operation.
- 5 Significant reduction of “scrap” parts.

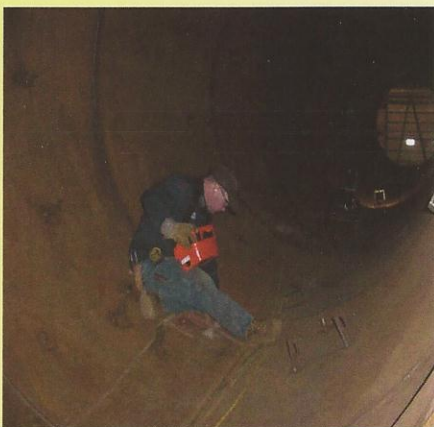


## HOW EZ-SEAM WORKS

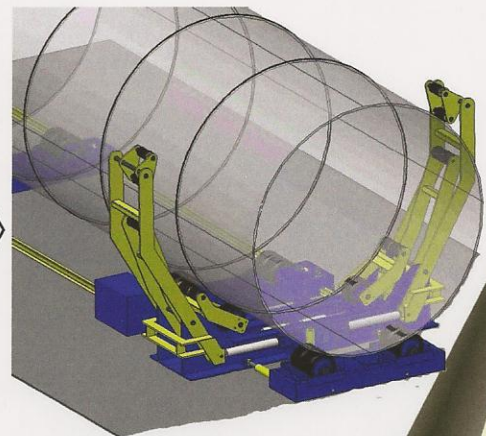
The first two tower section are positioned on the idler (A), the central positioner (B) and the “drive” rolls (C). The idler roll is mechanically connected to the main structure of the system and two independent hydraulic cylinders allow the operator to precisely align the edges of the two shells together.



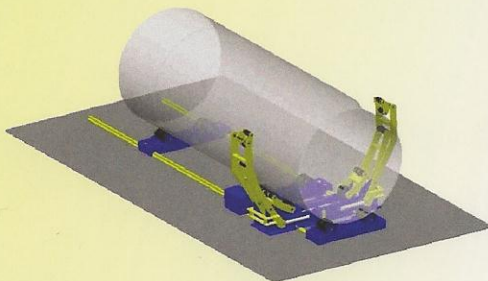
The operator controls perfect alignment of the ID of the 2 adjoining shells for the internal tack welding process. This alignment is precisely maintained as the two shells are supported and controlled by the simultaneous action of the rive rolls, the idler and, most importantly, the central self-centering arms which control consistent shells OD at 10 separate points. Final adjustments are easily made by the operator thanks to the action of the two hydraulic pushers positioned under each of the shells.



Only one operator is needed to control the complete alignment and tack welding



The same process is used to position and weld the remaining shells needed to complete wind tower sections up to 80 feet long.



Idler will maintain longitudinal position control along the entire length of the rail system.



**EZ- SEAM - MADE WITH PRIDE IN THE USA**

Over 50% reduction of section positioning time!  
Can you really afford not having an  
EZ-Seam Weld Positioner?



**C Marshall Fabrication Machinery, Inc.**  
2281 Oakdale Circle, Simi Valley, CA 93063  
Ph 805-527-1340 Fax 805-527-7619

E-mail: [cary@cmarshallfab.com](mailto:cary@cmarshallfab.com)  
[www.cmarshallfab.com](http://www.cmarshallfab.com)

